

# AQUAMATCH COMPANY MISSION

## Meet the Dutch !

On the **7<sup>th</sup>** and **8<sup>th</sup>** of **November**

Come and meet French companies interested to develop new technical and commercial partnerships in the Netherlands.

## **LIST OF FRENCH COMPANIES:**

- 1. XPERT**
- 2. OREDUI**
- 3. AZUVIA**
- 4. MMPI PROCESS**
- 5. AMIAD WATER SYSTEM**
- 6. NOMADO**
- 7. GREENCITYZEN**
- 8. CRYOFILTRATION**
- 9. AQUAPROCESS**
- 10. LOTUS EXPERIENCES**
- 11. ECT (Eaux Collectives & Traitements)**
- 12. AQUA-MODULE**

## XPERT

2753 route des dolines - Sophia Antipolis, 06410 BIOT

<https://www.x-pert.fr/>



**Describe your technology:** XPERT is an innovative French company specializing in undersea ecosystems and infrastructures solutions

Deep seabed exploration is a global priority. It requires the collection of a lot of data to improve knowledge of the funds but also to measure the impact of environmental or resource exploitation policies. For this, it is necessary to have access to efficient technologies to ensure the transmission of data over an area 17 times larger than the land area. XPERT is a technology development company dedicated to the exploration, exploitation, monitoring, protection and defense of the seabed.

**Who are current or future end users of your product :** XPERT is an innovative French company specializing in undersea ecosystems and infrastructures solutions. The scientific approach of R&D is supported by a team of 10 PhDs and engineers, the majority of whom have been experts in their fields for more than 15 years: data analysis, signal processing, electronics, mechatronics, underwater IoT, implementation of innovation projects.

**Stage of development:** XPERT offers two products. Both are prototypes undergoing test in real conditions.

(1-) SUPION, a pressur underwater digital sensor with an innovative plug and play system. This sensor new generation is ultra compact and digital, ultra low power and doesn't need for calibration.

(2-) IMPALA, to redesign IoT power in undersea autonomous systems. Impala facilitates the implementation of ultra-low power strategy by extending the run time and reducing the on-site interventions.

**Description of partners you are looking for :** Discover new opportunities related to water market in the Netherland and Europe. Industrials, Public service, State

**Unique selling point / innovative aspect of your product:** Our solutions introduce for this event are supporting the design of effectif

underwater autonomous systems by :

- Impala power management solution to increase the battery lifetime
- Supion a new solution of underwater compact digital pressure sensor without calibration phase

**How does your technology differ from existing one ?**

Exceed known speeds and distances but above all applicable whatever the conditions: obstacles, opacity, surface water, seabed

Our technology combines a highly accurate digital pressure sensor and an innovative intelligent power management system, enhancing the efficiency and reliability of underwater IoT systems beyond current capabilities.

**Where can this technology be applied:** Underwater autonomous systems;

Underwater monitoring;

Underwater communication for civil or defense

**What expertise should your partner have?** The partners which could be fitting are:

- constructors/integrators of autonomous system
- constructors/integrators of underwater monitoring system
- constructors/integrators of underwater IoT
- industrial or public service needing efficient underwater communication

**What type of cooperation are you looking for:** Product licensing partnership, product buyer, R&D co-development, provider of environment for test

**Role of your partner in cooperation:** Cooperation to integrate XPERT solutions in underwater systems (already existing or development pending)

Cooperation with XPERT team to design and install an autonomous solution to monitoring underwater areas

**What is your goal to join the mission:**

To meet important players of the underwater IOT and/or autonomous monitoring systems To collect industrial contacts;

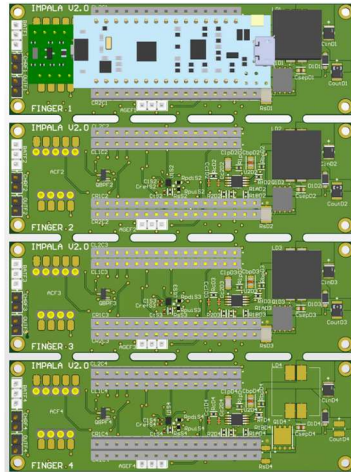
To improve underwater systems market knowledge



## IMPALA®

### Features

- Batterie range: 3.0 to 30 V
- Accurate fuel gauge
- ARDUINO/STM32 Nano compatible MCU
- Up to 4 independent power lines
- Power line custom level (up to 10W)
- Individual current consumption
- AI model to extend battery life



### Applications

- Underwater devices
- Wearables
- UIOT applications
- Weather station equipment
- Mesh network application
- Water depth monitoring



## SUPION®

### Features

- Current consumption down to 1.7  $\mu$ A
- Absolute pressure accuracy: 0.5 mbar
- Low pressure sensor noise: 0.32  $\mu$ Bar
- Embedded temperature compensation
- 24-bit pressure data output
- ODR from 1 Hz to 200 Hz
- I<sup>2</sup>C
- No external components
- Hermetic packaging for underwater/outdoor devices
- Supply voltage: 1.7 to 3.6 V



### Applications

- Underwater devices
- Wearables
- UIoT applications
- Weather station equipment
- Mesh network application
- Water depth monitoring
- Industrial pressure control

## OREDUI

ZI Bois de Grasse, 06130 GRASSE

[www.sarpi.veolia.com](http://www.sarpi.veolia.com)

**Describe your technology:** Collection and treatment of special waste

**Who are current or future end users of your product :** Purification of industrial effluent for reuse

**Stage of development :** Industrial test underway for the reuse of treated industrial effluent

**Description of partners you are looking for :** Sharing of experience, technical update on treatment finishing tools with a view to reusing treated industrial effluent, possible industrial uses, similar activity, solution provider, same project already in operation,...

**Unique selling point / innovative aspect of your product:** We don't sell technology but a service. We treat industrial used water until to be able to reuse it

**Where can this technology be applied:** In this purpose, we have installed the good level of technology on our own treatment unit

**What expertise should your partner have?** Potentially on PFAs treatment

**What type of cooperation are you looking for:** knowledges shared and eventually supply of materials

**Role of your partner in cooperation:** knowledges transfert

**What is your goal to join the mission:** Sharing of experience, updating my knowledge on treatment finishing tools with a view to reusing treated industrial effluent, to envisage others possible industrial uses, etc.

## Azuvia

183 CHE DU 12EME REGIMENT ZOUAVES ,  
Morières-Lès-Avignon

[www.azuvia.fr](http://www.azuvia.fr)



**Describe your technology:** Azuvia is a French start-up specialising in ecological water treatment, basing its processes on plants and micro-organisms grown in greenhouses. The young company has developed an Ecological System for the Treatment of Industrial and Agricultural Effluents (SETEIA) to treat liquid effluents generated during industrial and agricultural processes. This innovation is particularly well-suited to the degradation of organic pollution. Once treated, the water can be reused or returned to the natural environment without any negative impact on ecosystems.

**Who are current or future end users of your product :** Azuvia is developing strong skills in water treatment engineering and R&D on new water treatment techniques. With a team of 15 people, 70% of whom are technical, Azuvia contributes to innovation in the service of nature and mankind.

**Stage of development:** Azuvia systems are ecological, compact, automated and aesthetically pleasing. Azuvia invests a great deal of resources in R&D to bring robustness and resilience to its innovations. Currently in the SEED phase, Azuvia is planning a Series A in 2025 to finance its international expansion.

**Description of partners you are looking for :** Discover new opportunities related to water market in the Netherland and Europe. Beta Tester in Europe, Manufacturer / Supplier, academic partners, investors

**Unique selling point / innovative aspect of your product:** The seteia is the most compact and aesthetic biological effluent treatment system on the market.

**How does your technology differ from existing one ?** The Azuvia technology differs from other biological technologies in that it is the only one that is under glass and where all the biology is grown in hydroponics, i.e. above-ground and in tiers. This allows us to save ground space.

**Where can this technology be applied:** SETEIA is a technology for treating industrial and agricultural wastewater loaded with organic matter. This technology is currently adapted to treat effluent from wineries, the food industry and composting platforms.

**What expertise should your partner have?** The partner should have a need that hasn't been solved yet. Industries that have the ability to produce parts of our hardware. Academics that are doing R&D on the biological treatment field

**What type of cooperation are you looking for:** Co-Development

**Role of your partner in cooperation:** The partner brings what he is expert on and Azuvia brings its technology and know how



**What is your goal to join the mission:** Business Development, networking and partnership

## MMPI PROCESS

BP 219, MARSEILLE CEDEX 14

[www.mmpiprocess.fr](http://www.mmpiprocess.fr)

---

# MMPI PROCESS

**Describe your technology:** engineering, benchmarking, selling and commissioning industrial pumps and fittings

**Who are current or future end users of your product :** hydraulics, chemistry and electromecanics skills

**Stage of development:** connected pumps and fittings, industrial commissioning skills

**Description of partners you are looking for :** Technology partners, Pump builder, motor builder, valve builder

**What type of cooperation are you looking for:** Give us the distribution of their products

**Role of your partner in cooperation:** Give us the distribution of their products

**What is your goal to join the mission:** Find partners to import their products into France and/or export them abroad



## AMIAD WATER SYSTEM Europe SAS

100 avenue de l'anguillon 13160 CHATEAURENARD,

[www.amiad.com](http://www.amiad.com)



**Describe your technology:** Active leader in water filtration market. Mainly in self-cleaning technologies. Focusing in implementing disc filtration systems

**Who are current or future end users of your product :** engineering companies, industrial customer.

**Description of partners you are looking for :** customer with filtration needs

**Unique selling point / innovative aspect of your product:** Easy maintenance, energy saving, economic, modularity

**How does your technology differ from existing one ?** More modular, offering bigger filtration area and enhanced customer experience.

**Where can this technology be applied:** Waste water, waste water reuse, cooling.

**Stage of development of technology:** TRL9 : Actual system has proven through successful mission operations.

**What expertise should your partner have?** water expertise

**What type of cooperation are you looking for:** sales / business

**What is your goal to join the mission:** increase my network

## NOMADO

15 rue des frères cubeddu, MARSEILLE

<https://www.nomad-o.com>



**Describe your technology:** Design & built of water treatment plant (modular plants, containerized and skid mounted)

**Who are current or future end users of your product :** Municipal, industrial, harbor, civil works company

**Stage of development:** TRL9 : Actual system has proven through successful mission operations.

**Description of partners you are looking for :** we are looking for partners who can prescribe our solutions, customers who have problems with water discharge

**How does your technology differ from existing one ?** This technology is design with modular elements and use less footprint

**Where can this technology be applied:** Everywhere water treatment is needed

**What type of cooperation are you looking for:** Engineering and design department

**Role of your partner in cooperation:** Prescribe our solutions

**What is your goal to join the mission:** Meet some new partners to develop our business locally



## Greencityzen

68 rue Sainte, Marseille

<https://www.greencityzen.fr/accueil/>



**Describe your technology:** Greencityzen provides solutions for digitizing the operation of wastewater and stormwater

and green spaces. Solutions includes connected sensors (IoT), application platforms/dashboards and services.

- Solution for monitoring black spots and water infiltration in wastewater networks
- Gullies monitoring solution to optimize cleaning and reduce waste in the natural environment
- H2S monitoring solution to objectify complaints and optimize water treatment
- intelligent watering solution for green spaces to reduce reduce water consumption and decarbonize operations.

**Who are current or future end users of your product :** Smart cities

**Stage of development:** TRL9 : Actual system has proven through successful mission operations.

**Description of partners you are looking for :** customers and distributors

**Unique selling point / innovative aspect of your product:** full end to end solution with robust Low TCO connected sensors, with long battery life and easy to deploy in big quantities.

**How does your technology differ from existing one ?** full solution ( sensor and platforme), sensors battery life, lower TCO

**Where can this technology be applied:** Waste water network

**What expertise should your partner have?** water and waste water market access

**What type of cooperation are you looking for:** distribution

**Role of your partner in cooperation:** distributor/business development

**What is your goal to join the mission:** Better understand the Netherlands market but also find partners for other countries as well as it is an international exhibition



Rainwater network management using data



Data-based management of odour nuisance from wastewater treatment plants

## CRYOFILTRATION

AIX-EN-PROVENCE

[www.cryofiltration.com](http://www.cryofiltration.com)



**Describe your technology:** Nanofiltration for pure water in food industry

**Who are current or future end users of your product :** Production of soups, juices, beers

**Stage of development:** TRL9 : Actual system has proven through successful mission operations.

**Description of partners you are looking for :** Food industry contractors

**Unique selling point / innovative aspect of your product:** Very high pure carbon block

**How does your technology differ from existing one ?** Quality of final water

**Where can this technology be applied:** Food industry like beers, wine, salads, soups, ice creams, bakery,....

**What expertise should your partner have?** Conception and installations of food process

**What type of cooperation are you looking for:** Agreement for cooperation

**Role of your partner in cooperation:** prescriptors

**What is your goal to join the mission:** Meet potential partners for developing



## ACQUAPROCESS

56, rue Saint Philippe, Nice

[www.acquaprocess.eu](http://www.acquaprocess.eu)



**Describe your technology:** The ®ACQUAPROCESS system allows the elimination of limescale, the destruction of biofilm and the weakening of bacteria, while leaving the water with its essential elements (calcium, iron, mineral salts, magnesium) that we need.

Our system is a real innovation in the field of water treatment. ACQUAPROCESS is the forerunner of natural, preventive and curative treatment of water circuits thanks to a unique and patented process of Ultra Low Frequency Induction (U.L.F.).

The system consists of two generators that send variable frequency and power signals directly to the pipe to be treated via two coiled inductors, thus creating a low frequency electric field.

1. The physico-chemical properties of the water are thus modified and the solubility power is increased. The encrusting calcite is suspended in the water in the form of powdery, non-encrusting aragonite, no longer “clinging” to the walls but remaining in suspension.

2. The Biofilm is removed and a dedicated generator creates frequencies that stress bacteria: the conditions thus created prevent the development of bacteria

®ACQUAPROCESS is also an interactive system that takes into account all the information of the hydraulic circuit via probes and communicates them by GSM, WIFI or Intranet link to the Server and allows to easily follow its operation from a cell phone, a computer or a tablet.

**Who are current or future end users of your product :** Hotels, Hospitals, Cities, Manufacturers, Facility managers...

**Stage of development:** TRL3 : Analytical and experimental critical function and/or characteristic proof of concept.

**Description of partners you are looking for :** Dealers specialized in water treatment or technical / maintenance direction of companies

**Unique selling point / innovative aspect of your product:** Unique ecological solution (no more chemical products, very low energy consumption) in the market that treats scale and bacteria

**How does your technology differ from existing one ?** Our technology is patented -

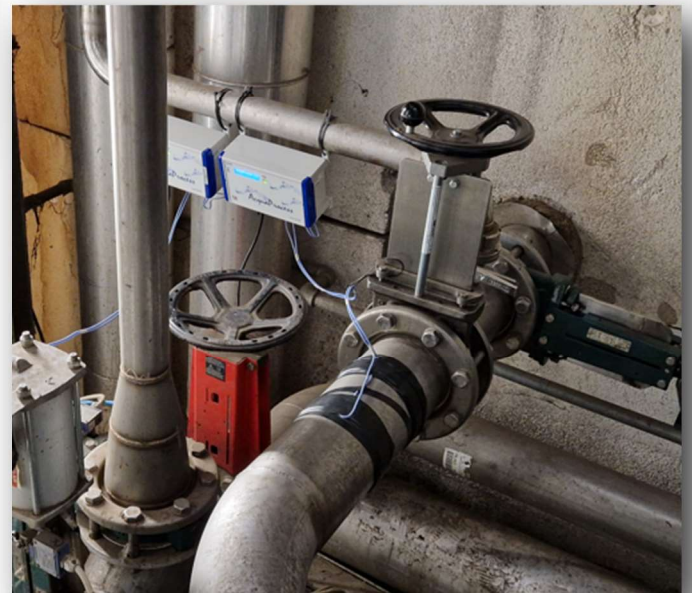
**Where can this technology be applied:** Everywhere you have a water network : hospitals, hotels, schools, business buildings, condominiums, low-costs housing, retirement homes, food factories...

**What expertise should your partner have?** Skills in water treatment (scale and bacteria)

**What type of cooperation are you looking for:** Dealer contracts in Netherland, Belgium, Germany, Spain...

**Role of your partner in cooperation:** Dealer or client

**What is your goal to join the mission:** To develop our dealer network



## Lotus Experiences

2014 CHEMIN DU VIADUC 13090 AIX-EN-PROVENCE, AIX-EN-PROVENCE

[www.lotusexperiences.com](http://www.lotusexperiences.com)



**Describe your technology:** We are currently working on an eco-friendly shower cabin, featuring an innovative material known as bamboo composite. This material not only enhances the product's durability and aesthetic appeal but also significantly contributes to water conservation throughout its lifecycle, from manufacturing to user experience. This sustainable shower cabin can be used for various sanitary purposes, including showers and toilets.

**Who are current or future end users of your product :** Our solution's adaptability, sustainable features, and versatility in serving both B2B and B2C markets make it well-suited to meet the needs of a wide range of end-users, contributing to water conservation and a more eco-conscious future across various industries and applications.

Hospitality Industry

Off-Grid and Remote Locations

Commercial Sector

Facility Management Companies

Real Estate Developers

Architects and Designers

Retailers and Distributors

Eco-Tourism and Recreational Facilities

Public Rest Areas and Transportation Hubs

Residential Consumers

**Stage of development:** TRL5 : Component and/or breadboard validation in relevant environment.

**Description of partners you are looking for :** Solution and innovation for the recycling of wastewater allowing greater autonomy and reduction of the impact of water consumption

**Unique selling point / innovative aspect of your product:** In terms of water consumption, our eco-designed shower cabin incorporates various features to minimize water wastage. The cabin is equipped with advanced water-saving technologies, such as low-flow showerheads, ensuring that users can enjoy a comfortable and hygienic experience while using significantly less water than conventional bathroom fixtures.

Furthermore, the eco-conscious design extends to the production process itself. We take great care to minimize waste and energy consumption during manufacturing, utilizing eco-friendly production techniques and materials. This ensures that the environmental footprint of our shower cabin remains as minimal as possible.

Our eco-designed shower cabin not only represents a sustainable and innovative solution for personal hygiene but also demonstrates our commitment to preserving the environment. By incorporating bamboo composite and water-saving technologies, we aim to provide users with an eco-friendly and



enjoyable bathroom experience while contributing to the global effort to conserve water and reduce our impact on the planet.

**How does your technology differ from existing one ?** Our eco-designed shower cabin sets itself apart with innovative bamboo composite material, ensuring sustainability and durability. It integrates advanced water-saving technologies, reducing water consumption without compromising comfort. This holistic approach extends to eco-friendly manufacturing processes and versatile applications across residential, commercial, and recreational settings. Our technology caters to both B2B and B2C markets, making it an ideal choice for businesses aiming to enhance sustainability and individual consumers seeking eco-friendly bathroom solutions. With a focus on sustainability, this shower cabin is an excellent fit for green building projects and contributes to a more environmentally responsible future.

**Where can this technology be applied:** The technology and principles employed in the eco-designed shower cabin with bamboo composite and water-saving features offer a versatile solution that can be tailored to meet the needs of both B2B and B2C markets.

Hospitality Industry : Hotels, resort

**What expertise should your partner have?** A partner in wastewater recycling innovation should have expertise in water treatment, environmental engineering, process optimization, regulatory compliance, smart technologies, project management, R&D, market understanding, sustainability, policy, and financial resources. This multifaceted knowledge ensures the successful development, implementation, and promotion of water recycling solutions.

**What type of cooperation are you looking for:** At Aquatech 2023, we are actively seeking collaborations and strategic partnerships to further develop and promote our water treatment management innovation. We believe that through partnerships, we can leverage collective expertise and resources to drive

**Role of your partner in cooperation:** The partner's role in cooperation includes expertise contribution, technology development, project implementation, regulatory compliance, resource allocation, sustainability focus for wastewater recycling initiatives. The partner's role is to bring expert

**What is your goal to join the mission:** our participation in Aquatech aligns with our mission to drive positive change in the water management industry and to work collaboratively with others who share our vision of a more sustainable and water-conscious future.

Connect with like-minded indust

## ECT

80, impasse du serpolet 13600 La Ciotat, La Ciotat

[www.ectfrance.com](http://www.ectfrance.com)



**Describe your technology:** We have two activities : Water Treatment and Impressed Current Cathodic Protection (ICCP) applied to protect tanks against internal corrosion.

In Water Treatment we manage technologies such as filtration, ion exchange resins, Reverse Osmosis, UV reactors, ozonation, groundwater pollution reduction, etc..

We also design, install and maintain ICCP systems in water tanks.

**Who are current or future end users of your product :** Industries, public swimming pools, hotels, hospitals,...

**Stage of development:** TRL9 : Actual system has proven through successful mission operations.

**Description of partners you are looking for :** Distributor and or Installers

**Unique selling point / innovative aspect of your product:** Very very few companies sell the technology of Impressed Current Cathodic Protection applied to protect from corrosion internal surfaces of tanks. Moreover, ECT has a software able to simulate and design with numerical calculus our anodes (shape, position, current needed, etc...)

**How does your technology differ from existing one ?** Our technology (ICCP) cost between a third and half the cost of a tank replacement. We offer a ten year warranty. It can be applied where coating reach their limit (high temperature, sea water, extremely corrosive environment. It works on every kind of corrosion and we only use mineral based coating

**Where can this technology be applied:** For ICCP systems : in sand filters, in hot water tanks, in sea water tank, in water towers, sludge tanks, brine tanks, wells conduits,...

**What expertise should your partner have?** Sales and or implementation of water treatment systems

**What type of cooperation are you looking for:** win win cooperation

**Role of your partner in cooperation:** Sale and instal. We will provide the hardware, the know how, design studies, and support for maintenance. Our partner will sell the installation and the maintenance contracts

**What is your goal to join the mission:** find new customers



Reverse osmosis line for a washing tunnel including a de-manganisation station, an iron removal station and an ion exchange resin softening station.



Agrofood Industry



Chlorine dioxide disinfection in hospitals

# DON'T LET YOUR DOMESTIC HOT WATER TANKS FINISH LIKE THIS!



## WHAT HAPPENED?

Any coating – even one that’s been applied perfectly – has a porosity that allows the oxygen present in water to come into contact with the metal wall. This causes oxidation and leads to **localized disbondment caused by the rust.**

Corrosion accelerates in these unprotected areas and the coating deteriorates. The bare spots grow and progressively work through the wall thickness. **This inevitably leads to perforations in the walls.**

## IMPRESSED CURRENT CATHODIC PROTECTION (ICCP) IS THE SOLUTION

ICCP **blocks oxidation** of the metal at the surface, supplying the electrons that the oxygen would have taken from the metal. It **halts deterioration** of the coating and **extends the service life of your tanks.**



AQUA-MODULE

975D. route de Fréjus, domaine des colombier

[www.aqua-module.com](http://www.aqua-module.com)



**Describe your technology:** Aqua Module is an innovative player in the field of equipment and accessories dedicated to nautical activities in an aquatic environment. The company has developed a range of floating pontoon references: our Aquadock and Cubedock platforms are intended fo

**How does your technology differ from existing one ?** it doesn't exist, we have a patent and we are the only ones who has it

**Who are current or future end users of your product :** ports, Marinas

**Stage of development :** TRL9 : Actual system has proven through successful mission operations.

**Description of partners you are looking for :**

**Unique selling point / innovative aspect of your product:** It is the ultimate in signaling and marking buoys in aquatic environments. Aqua-Module's lighting solutions are intelligent, autonomous and ecologically sustainable. Patented, our technology is recognized by the scientific community and praised all over tit doesn't exist, we have a patent and we are the only ones who has it

**Where can this technology be applied:** Maritime security

**What expertise should your partner have?** The distribution network, the sales force to get access to the market

**What type of cooperation are you looking for:** sellers/distributers

**Role of your partner in cooperation:** Sales

**What is your goal to join the mission:** collecte information and data in this sector, meet public and private organization and companies, establishing partnership



Ponton Croisette beach Cannes - day



Ponton Croisette beach Cannes - night



Floating Construction - Italy



Patented connected light buoys